

M.A. Environmental and Occupational Health

(MAEOH)

Details of the Programme

- **Title:** M.A. Environmental and Occupational Health
- **Type of the Programme:** MASTERS
- **Medium of Instruction:** English
- **Duration of the Programme:** Minimum of two years and maximum of four years.
- **Total Credits:** 74
- **Fee:** Rs 13,200/=

Target Group: Graduation from any discipline

- Professionals working in environmental and occupational sector and NGOs.
- Doctors, nurses, paramedical graduates & employees
- Employees from CPCB, Civil servants of State and Central Governments.
- Faculty, researchers and students in universities, research organizations and colleges.
- Graduates aspiring to pursue a career in environmental management, occupational health & safety, industrial health & safety.

Job Opportunities

Built Environment Specialist,

Consumer Safety Officer,

Environmental health & safety specialist,

Environmental Health Policy Analyst,

HSE-Coordinator

EHS officer-Industrial Safety

Protection Officer,

Ergonomist,

Food Safety Specialist,

Industrial Hygienist,

Occupational Health and Safety Specialist,

Safety and Environmental Health Manager,

Sanitary specialist,

Toxicologist,

Worksite Wellness Coordinator,

EHS managers for MNC –remote role

Health Safety engineer

Health Policy Analyst,

EHS managers for MNC

EHS consultants for MNC

Public Administration and Safety Professional,

Scientific, Technical Services and Manufacturing.

Objectives

- **Discuss** the impact of environmental hazards on human health.
- **Describe** the policies, laws, standards, measurement techniques and application in different occupational setups.
- **Develop** mitigation strategies to contain and manage environmental and occupational hazards for positive health.
- **Exhibit** the knowledge and skills needed to improve the environmental sustainability of human health systems.

- **MAE0H: Consists of 12 core courses including a project of four credits each and 06 electives.**
- **MAE0H programme: 74 credits.**

MA 1st Year

CORE COURSES:

MEV-001 Introduction to Environmental Health

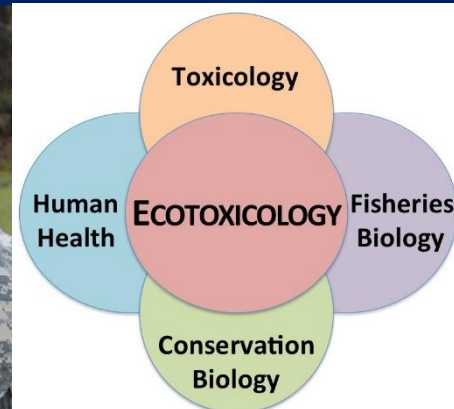
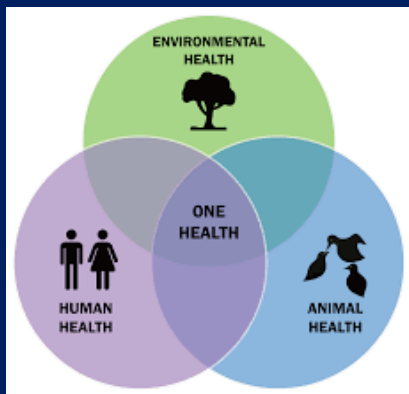
MEV-002 Environmental and Occupational Hazards

MEV-003 Environmental Law and Management

MEV-004 Environmental Toxicology

MEV-005 Occupational Health and Safety

MEVP-001 Project



MA 1st Year

ELECTIVES

**MEVE-001 Environmental Impact
Assessment for Environmental Health**

MEVE-002 Health Care

MEVE-003 Agriculture and Allied Sector

MEVE-004 Industrial Sector

MA 2ND Year

CORE COURSES:

MGSE-009 Gender Issues in Work, Employment and Productivity.

MEVE-015 Disaster Management

MEV-014 Sustainable Natural Resource Management

MIS-021 Safety Philosophy and Principles of Accident Prevention

MPA-006 Disaster Medicine

MPC-051 Fundamentals of Mental Health

MA 2ND Year

ELECTIVES:

MEVE011 Global Climate Change

MGSE-004 Gender issues in Agriculture, Rural livelihoods and Natural Resource Management

MED-008 Globalization, Environment and Development

MGY-001 Introduction to Geoinformatics


INSTRUCTIONAL SYSTEM

The instructional system of PGDEOH also follows multi-media approach.

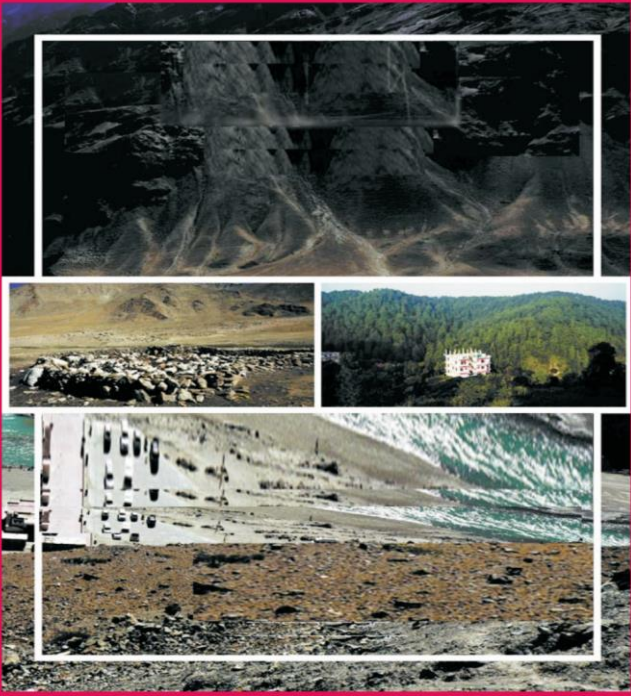
i.e. SLM, audio-video programmes, assignments, counselling sessions, project work, teleconferencing and interactive radio counselling.



Self-instructional print material Assignments


 **ignou**
THE PEOPLE'S
UNIVERSITY
Indira Gandhi National Open University
School of Interdisciplinary and
Trans-disciplinary Studies

MEV-001
Introduction to
Environmental Health



ENVIRONMENT AND ECOLOGY 1

INDIRA GANDHI NATIONAL OPEN UNIVERSITY
इन्दिरा गॉंधी राष्ट्रीय मुक्त विश्वविद्यालय

 **ignou**
THE PEOPLE'S
UNIVERSITY

ENROLLMENT NO. :

NAME :

ADDRESS :

PROGRAMME TITLE :

COURSE TITLE :

COURSE CODE :


REGIONAL CENTRE CODE :

STUDY CENTRE & CODE :

PHONE NO. :

EMAIL ID :

Students can download the assignments from IGNOU website (www.ignou.ac.in), student's zone.

- 
- The learner must complete 12 core courses and 6 electives in total 18 courses with 74 credits to get the MA Degree.
 - After successful completion of the 1st year the learners can get PG Diploma with an exit option.
 - Term-end examination is held twice a year: June and December.

Admission Link

- <https://ignouadmission.samarth.edu.in/>



The logo of Indira Gandhi National Open University (IGNOU) is displayed, featuring a stylized 'S' inside a circle. To the right of the logo, the text reads 'ignou THE PEOPLE'S UNIVERSITY'. Below this, a blue banner contains the text 'Admission Notification' in white. At the bottom of the banner, a white bar contains the text 'Bachelor Degree, Master Degree, Certificate, Diploma' in blue.

Programme Coordinators

Prof. B. Rupini (9911223373)

School of Interdisciplinary and Trans-disciplinary Studies, IGNOU

Dr. Sushmitha Baskar (9013880206)

School of Interdisciplinary and Trans-disciplinary Studies, IGNOU

Prof. Ruchika Kuba (9868007747)

School of Health Science, IGNOU, New Delhi